

L Series

Bill Acceptor

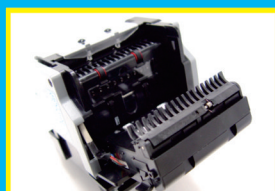
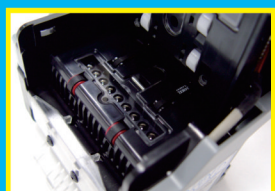
- New generation design of verification system.
- Lightweight and durable plastic construction.
- Fixed width/multi-width bill acceptable.
- Multinational currencies acceptable.
- Multicolor illumination bezel design.
- Anti-string technology.
- Fast program update.
- Speedy bill transaction.
- Selective interfaces.
- Auto-calibration.
- Easy maintenance.



L Series

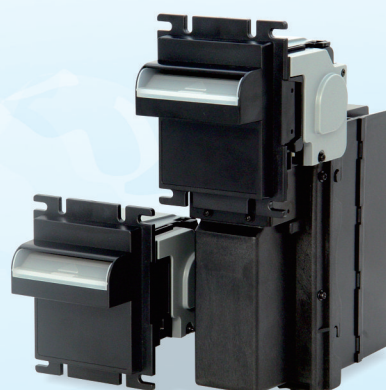
Bill Acceptor

The L Series bill acceptor combines improved bill-sensing technology with lightweight and durable plastic construction. It also features fast software updating, and easy maintenance to increase acceptance rates and reduce bill jammed.



L70

L70-P5



L77F

L77F-P5



L83

L83-P6



Without
metal bracket
L70T-P5/L77T-P5

With
metal bracket
L70T-P5/L77T-P5



L Series

Specifications



Acceptance Rate

96% or greater



Bill Insertion

Four-way



Acceptance Speed

Approx. 3 seconds to cash box



Bill Width Accepted

L70#-P2/P5, L70F-P2/P5:
 (67mm) 59-67mm/ 2.32-2.64 inches
 (71mm) 59-71mm/ 2.32-2.8 inches

L77F-P2/P5:
 72-77mm/ 2.83-3.03 inches

L83-P3/P6, L83#-P3/P6:
 61-83mm/ 2.40-3.27 inches
 61-79mm/ 2.40-3.11 inches(Y Type Bezel)

L70T-P5:
 65-70mm/ 2.56-2.75 inches

L77T-P5:
 72-77mm/ 2.83-3.03 inches



Capacity

L70#-P2, L70F-P2: Approx.200 notes

L70#-P5, L70F-P5: Approx.500 notes

L77F-P2: Approx.150 notes

L77F-P5: Approx.500 notes

L83-P3, L83#-P3: Approx.300 notes

L83-P6, L83#-P6: Approx.600 notes

L70T-P5, L77T-P5: Approx.500 notes



Interface

L70#:
 Pulse, RS232, RS232 A0, ccNet(compatible),
 MDB, ccTalk

L70:
 Pulse, RS232, RS232 A0, Parallel A1

L70F, L77F:
 Pulse, RS232, RS232 A0, ccNet(compatible),
 MDB, ccTalk, Pulse(Out of service)

L83:
 Pulse, RS232, RS232 A0, ccNet(compatible),
 MDB, ccTalk, RS232 A1, Parallel, Parallel A4,
 Pulse(Out of service)

L83#:
 Pulse, RS232, RS232 A0, ccNet(compatible),
 MDB, ccTalk, RS232 A1 Pulse(Out of service)

L70T, L77T:
 Pulse, RS232, RS232 A0, ccNet(compatible),
 MDB, ccTalk, V2.2, Pulse(Out of service)



Power Source

L70#/ L70F/ L77F/ L83#/ L70T/ L77T:
 12V DC(10-16V DC)

Others: 12V DC(10.8-13.2V DC)



Power Consumption

Standby: 0.3A, 3.6W
 Operation: 1.2A, 14.4W
 Maximum: 2A, 24W



Environmental

Operation Temperature:
L70/ L83: 0°C/ 32°F-50°C/ 122°F
L70F/ L77F/ L70T/ L77T: 0°C/ 32°F-60°C/ 140°F
L70#/ L83#: 0°C/ 32°F -65°C/ 149°F
 Storage Temperature: -20°C/ -4°F~70°C/ 158°F
 Humidity: 30%-85% RH (no condensation)



Dimension

N Type Bezel :A Bezel(67mm) and B Bezel(71mm)

L70 : (W)102.8x(H)134.0x(D)132.1 mm/
 (W)4.05 x(H)5.28 x(D)5.20 inches
L70-P2: (W)102.8x(H)285.7x(D)188 mm/
 (W)4.05 x(H)11.25x(D)7.40 inches
L70-P5: (W)102.8x(H)285.7x(D)216.8 mm/
 (W)4.05 x(H)11.25x(D)8.54 inches

O Type Bezel:(71mm)

L70 : (W)102.8x(H)133.0x(D)118.7 mm/
 (W)4.05 x(H)5.24 x(D)4.67 inches
L70-P2: (W)102.8x(H)263.2x(D)174.1 mm/
 (W)4.05 x(H)10.36x(D)6.85 inches
L70-P5: (W)102.8x(H)263.2x(D)203 mm/
 (W)4.05 x(H)10.36x(D)7.99 inches

I Bezel:(78mm)

L77F : (W)102.4x(H)134 x(D)131 mm/
 (W)4.03 x(H)5.28 x(D)5.16 inches
L77F-P2: (W)102.4x(H)272.6x(D)172.8 mm/
 (W)4.03 x(H)10.73x(D)6.80 inches
L77F-P5: (W)102.4 x(H)272.6x(D)221.2 mm/
 (W)4.03 x(H)10.73x(D)8.71 inches

E Type Bezel:(83mm)

L83 : (W)117.4x(H)133.2x(D)138.5 mm/
 (W)4.62 x(H)5.24 x(D)5.45 inches
L83-P3: (W)117.4 x(H)260.5x(D)222.2 mm/
 (W)4.79 x(H)10.26x(D)8.75 inches
L83-P6: (W)117.4 x(H)260.5x(D)269.2 mm/
 (W)4.79 x(H)10.26x(D)10.6 inches

F Type Bezel:(83mm)

L83-P3: (W)118.0 x(H)251.1x(D)221.7 mm/
 (W)4.65 x(H)9.89 x(D)8.73 inches
L83-P6: (W)118.0x(H)251.1x(D)269.2 mm/
 (W)4.65 x(H)9.89 x(D)10.6 inches

Y Type Bezel:(79mm)

L83 : (W)117.4x(H)133.2x(D)133.1 mm/
 (W)4.62 x(H)5.24 x(D)5.24 inches
L83-P3: (W)117.4x(H)265 x(D)222.2 mm/
 (W)4.62 x(H)10.43x(D)8.75 inches
L83-P6: (W)117.4 x(H)265 x(D)269.2 mm/
 (W)4.62 x(H)10.43x(D)10.6 inches

L70T-P5, L77T-P5:

Without metal bracket:
 (W)106.8x(H)252.6x(D)230.6 mm/
 (W)4.20 x(H)9.94 x(D)9.08 inches

With metal bracket:
 (W)136.4x(H)357 x(D)234.1 mm/
 (W)5.37 x(H)14.1x(D)9.22 inches



Weight

L70#, L70F:
 Approx.0.52kg/ 1.15 lbs

L70#-P2, L70F-P2:
 Approx.1.25kg/ 2.76 lbs

L70#-P5, L70F-P5:
 Approx.1.4 kg/ 3.09 lbs

L77F:
 Approx.0.44kg/ 0.97 lbs

L77F-P2:
 Approx.1.35kg/ 2.98 lbs

L77F-P5:
 Approx.1.42kg/ 3.13 lbs

L83, L83#:
 Approx.0.8kg/ 1.76 lbs

L83-P3, L83#-P3:
 Approx.1.46kg/ 3.22 lbs

L83-P6, L83#-P6:
 Approx.1.65kg/ 3.64 lbs

L70T-P5, L77T-P5:
 Approx.1.42kg (Without metal bracket)
 Approx.7kg (With metal bracket)



Recommended Applications

Amusement, Gaming, Vending

Specifications are subject to change without prior notice.



International Currency Technologies

No.28, Ln. 15, Sec. 6, Minquan E. Rd., Neihu Dist., Taipei City 114, Taiwan

Phone: +886-2-2793-1236

Fax: +886-2-2793-6125

EMail: sales@ictgroup.com.tw (Product Information)

fae@ictgroup.com.tw (Technical Service)

Website: www.ictgroup.com.tw
