

## Leonid Series

---

# Mini Hopper

- Advanced optical coin low level detecting sensor.
- High coin capacity of ca. 500 coins.
- Maximum coin capacity up to 1000 coins with an extra extension bowl.



# Leonid Series

## Mini Hopper

Leonid Hoppers are categorized as a series coin dispensing unit for single denomination, yet user can easily alter payout path dimension by changing position of payout plate. The highest reliability of Leonid Hopper is achieved by its easy-operated and trouble-free design.

### Specifications



#### Interface

Pulse, ICT, Hopper, ccTalk, Red Flag



#### Dispensing Speed

12V DC: 5~6 coins/sec  
24V DC: 6~8 coins/sec



#### Applicable Coin Size

A Type- D:22.5~28mm/T:1.6~2.4mm  
B Type- D:20 ~23mm/T:1.6~2.2mm  
C Type- D:23 ~30mm/T:2.5~3.3mm  
D Type- D:23 ~30mm/T:1.6~2.4mm  
E Type- D:17.9 ~19.7mm/T:1.3~1.8mm  
F Type- D:22.5~28mm/T:1.0~1.5mm  
G Type- D:20 ~23mm/T:1.2~1.6mm  
H Type- D:28 ~31mm/T:2.0~2.8mm



#### Coin Capacity

ca. 500 coins



#### Coin Quantity Detection

Empty: optical sensor.



#### Power Source

MH-12XXX: 12V DC (11.4~12.6V DC)  
MH-24XXX: 24V DC (22.8~25.2V DC)



#### Power Consumption

12V DC: Standby: 0.05A, 0.6W  
Not loaded: 0.75A, 9W  
Maximum: 2.5A, 30W  
24V DC: Standby: 0.05A, 1.2W  
Not loaded: 0.45A, 10.8W  
Maximum: 2.5A, 60W



#### Dimension

(D)157.3 x (W)105 x (H)150.7 mm  
(D)6.2 x (W)4.13 x (H)5.93 inches



#### Weight

ca. 800g



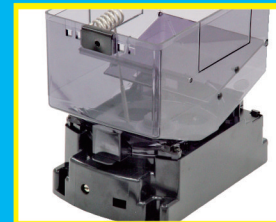
#### Environmental

Operating Temperature: 5°C~50°C  
Storage Temperature: -30°C~70°C  
Humidity: 30%~85%RH  
(no condensation)



#### Recommended Applications

Indoor Gaming/ Amusement



Specifications are subject to change without prior notice.



### International Currency Technologies

No.28, Ln. 15, Sec. 6, Minquan E. Rd., Neihu Dist., Taipei City 114, Taiwan

Phone: +886-2-2793-1236

Fax: +886-2-2793-6125

Email: sales@ictgroup.com.tw (Product Information)

fae@ictgroup.com.tw (Technical Service)

Website: www.ictgroup.com.tw